



JETRUS

JET в России

HVBS-712L

Metal Band Saw

JRM80712T

3~400V 50Hz

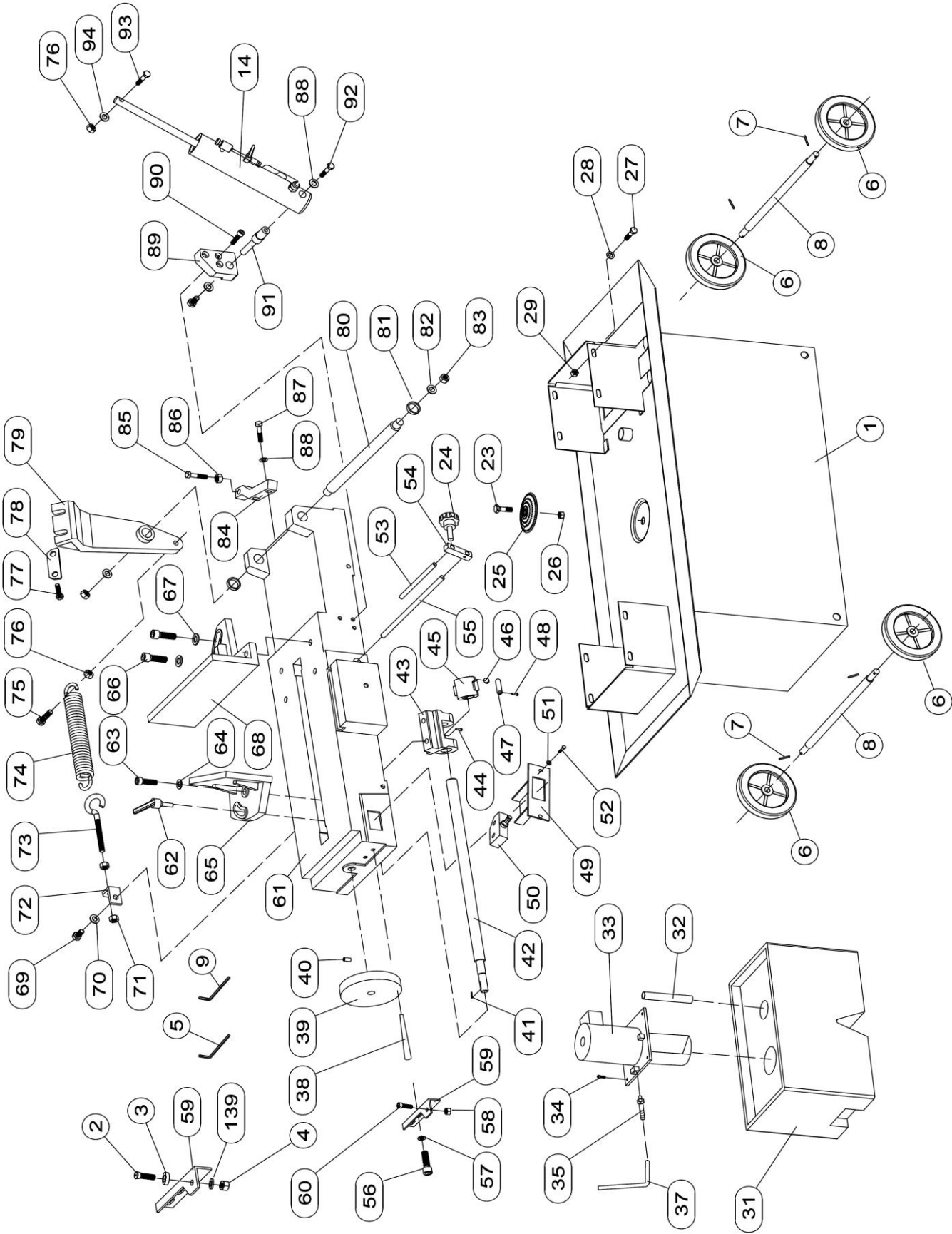
PARTS LIST



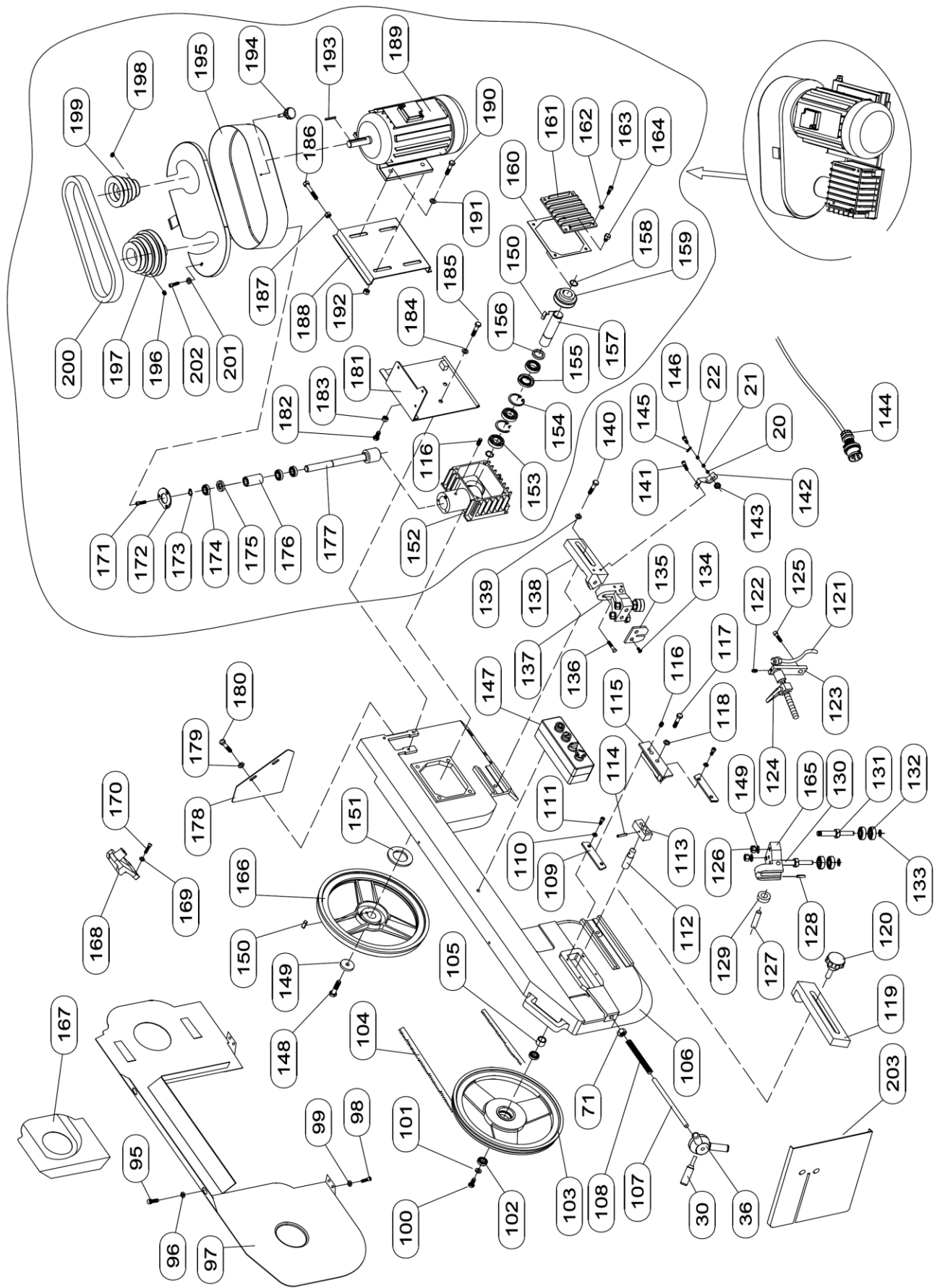
Импортер в РФ: ООО «ИТА Технолоджи»
105082, Москва, Переведеновский пер., д. 17
www.jettools.ru
Made in PRC / Сделано в КНР

P-JRM80712T 2025-06

Parts Breakdown for HVBS-712L Metal Band Saw-A



Parts Breakdown for HVBS-712L Metal Band Saw-B



Parts List for HVBS-712L Metal Band Saw

Index No.	Part No.	Description	Size	Qty
1	HVBS712L-001	Upper Board Of Bottom Pan		1
2	GB/T819.1	Flat Head Screw	M5x16	1
3	HVBS712L-003	Rubber Pad		1
4	GB/T6170	Hex Nut	M5	1
5	HVBS712L-005	Allen Wrench 8	8mm	1
6	HVBS712L-006	Foot Wheel	φ125Xφ12	4
7	GB/T91	Cotter	3x25	4
8	HVBS712L-008	Shaft For Foot Wheel		2
9	HVBS712L-010	Allen Wrench 10mm	10mm	1
14	HVBS712L-014	Hydraulic Cylinder		1
20	HVBS712L-20	Shaft Sleeve 1		1
21	HVBS712L-21	Shaft Sleeve 2		1
22	HVBS712L-22	Shaft Sleeve 3		1
23	GB/T5781	Hex. Cap Head Screw	M6X20	1
24	HVBS712L-24	Star Handle M8X16		2
25	HVBS712L-25	Filter Sieve		1
26	GB/T6170	Hex Nut	M6	1
27	GB/T70.1	Hex Scoket Head Cap Screw	M8X30	7
28	GB/T95	Flat Washer	8mm	7
29	GB/T6170	Hex Nut	M8	7
30	HVBS712L-030	Turning Handle M8x63		3
31	HVBS712L-031	Coolant Tank		1
32	HVBS712L-032	Leaking Pipe		1
33	HVBS712L-033	Coolant Pump		1
34	GB/T70.1	Hex Scoket Head Cap Screw	M6x16	4
35	HVBS712L-035	Hose Clamp		1
36	HVBS712L-036	Seat		1
37	HVBS712L-037	Exit Pipe		1
38	HVBS712L-038	Turning Handle M8X63		1
39	HVBS712L-039	Hand Wheel Φ125XΦ15		1
40	GB/T77	Hex.Scoket Set Screw	M6x6	1
41	GB/T1096	Key	5x20	1
42	HVBS712L-042	Lead Screw		1
43	HVBS712L-043	Braket		1
44	GB/T77	Hex.Scoket Set Screw	M6x16	1
45	HVBS712L-045	Acme Nut		1
46	HVBS712L-046	Backing Pin		1
47	HVBS712L-047	Elastic Tableting		1
48	GB/T70.1	Hex Scoket Head Cap Screw	M5x8	1
49	HVBS712L-049	Seat For Stop Switch		1
50	HVBS712L-050	Stop Switch		1

Parts List for HVBS-712L Metal Band Saw

Index No.	Part No.	Description	Size	Q'ty
51	GB/T95	Flat Washer	5mm	2
52	GB/T70.1	Hex Scket Head Cap Screw	M5x10	2
53	HVBS712L-053	Shaft For Stopper		1
54	HVBS712L-054	Block For Stopper		1
55	HVBS712L-055	Rod		1
56	GB/T70.1	Hex Scket Head Cap Screw	M8x16	2
57	GB/T95	Flat Washer	8mm	2
58	GB/T6170	Hex Nut	M8	1
59	HVBS712L-059	Guard Board		2
60	GB/T5781	Hex. Cap Head Screw	M8x30	1
61	HVBS712L-061	Bottom Seat		1
62	HVBS712L-062	Fixed Handle		1
63	GB/T70.1	Hex Scket Head Cap Screw	M10X35	1
64	GB/T95	Flat Washer	10mm	2
65	HVBS712L-065	Moving Vise		1
66	GB/T70.1	Hex Scket Head Cap Screw	M12x40	2
67	GB/T95	Flat Washer	12mm	2
68	HVBS712L-068	Fixed Vise		1
69	GB/T5781	Hex. Cap Head Screw	M10x20	1
70	GB/T95	Flat Washer	10mm	1
71	GB/6170	Hex Nut	M10	3
72	HVBS712L-072	Fixed Mount		1
73	HVBS712L-073	Pull-Tap Screw		1
74	HVBS712L-074	Tension Spring		1
75	GB/T5781	Hex. Cap Head Screw	M10x40	1
76	GB/T6170	Hex Nut	M10	2
77	GB/T70.1	Hex Scket Head Cap Screw	M10x35	2
78	HVBS712L-078	Pressure Pad		1
79	HVBS712L-079	Pivot Arm		1
80	HVBS712L-080	Rotating Shaft		1
81	HVBS712L-081	Spacer Bush		2
82	GB/T95	Flat Washer	16mm	2
83	GB/T6170	Hex Nut	M16	2
84	HVBS712L-084	Stand		1
85	GB/T5781	Hex. Cap Head Screw	M10x40	1
86	GB/T6170	Hex Nut	M10	1
87	GB/T5781	Hex. Cap Head Screw	M10x35	2
88	GB/T95	Flat Washer	10mm	4
89	HVBS712L-089	Fixed Board For Hydraulic Cylinder		1
90	GB/T70.1	Hex Scket Head Cap Screw	M8x30	3
91	HVBS712L-091	Shaft For Hydraulic Cylinder		1

Parts List for HVBS-712L Metal Band Saw

Index No.	Part No.	Description	Size	Qty
92	GB/T5781	Hex. Cap Head Screw	M8x16	2
93	GB/T70.1	Hex Scket Head Cap Screw	M10x45	1
94	GB/T95	Flat Washer	10mm	1
95	GB/T70.1	Hex Scket Head Cap Screw	M6x12	2
96	GB/T95	Flat Washer	6mm	2
97	HVBS712L-097	Blade Guard		1
98	GB/T70.1	Hex Scket Head Cap Screw	M5x10	4
99	GB/T95	Flat Washer	5 mm	4
100	GB/T5781	Hex. Cap Head Screw	M8x20	1
101	GB/T96.1	Big Washer	8mm	1
102	GB/T276	Bearing 6203-2Z	6203-2Z	2
103	HVBS712L-103	Idle Wheel		1
104	HVBS712L-104	Blade		1
105	HVBS712L-105	Spacer Bush		1
106	HVBS712L-106	Saw Bow		1
107	HVBS712L-107	Rod		1
108	HVBS712L-108	Spring		1
109	HVBS712L-109	Board		2
110	GB/T95	Flat Washer	6mm	4
111	GB/T70.1	Hex Scket Head Cap Screw	M6X16	4
112	HVBS712L-112	Shaft		1
113	HVBS712L-113	Seat Of Shaft		1
114	GB/T897	Spring Pin	4X20	1
115	HVBS712L-115	Moving Block		1
116	GB/T77	Scket Set Screw	M8X16	2
117	GB/T5781	Hex. Cap Head Screw	M8X35	2
118	GB/T95	Flat Washer	8mm	2
119	HVBS712L-119	Rear Adjustable Stand		1
120	HVBS712L-120	Stellate Handle M10X35		1
121	HVBS712L-121	Copper Tube Φ 6		1
122	GB/T77	Scket Set Screw	M6x6	1
123	HVBS712L-123	Nozzle Support		1
124	HVBS712L-124	Coolant Switch Assembly		1
125	GB/T70.1	Hex Scket Head Cap Screw	M8x30	1
126	GB/T6171	Hex Nut	M10X1	4
127	HVBS712L-127	Shaft		2
128	GB/T818	Pan Head Screw	M4X6	2
129	GB/T276	Bearing 608-2Z	608-2Z	2
130	HVBS712L-130	Shaft		2
131	HVBS712L-131	Eccentric Shaft		2
132	GB/T276	Ball Bearing	608-2Z	8

Parts List for HVBS-712L Metal Band Saw

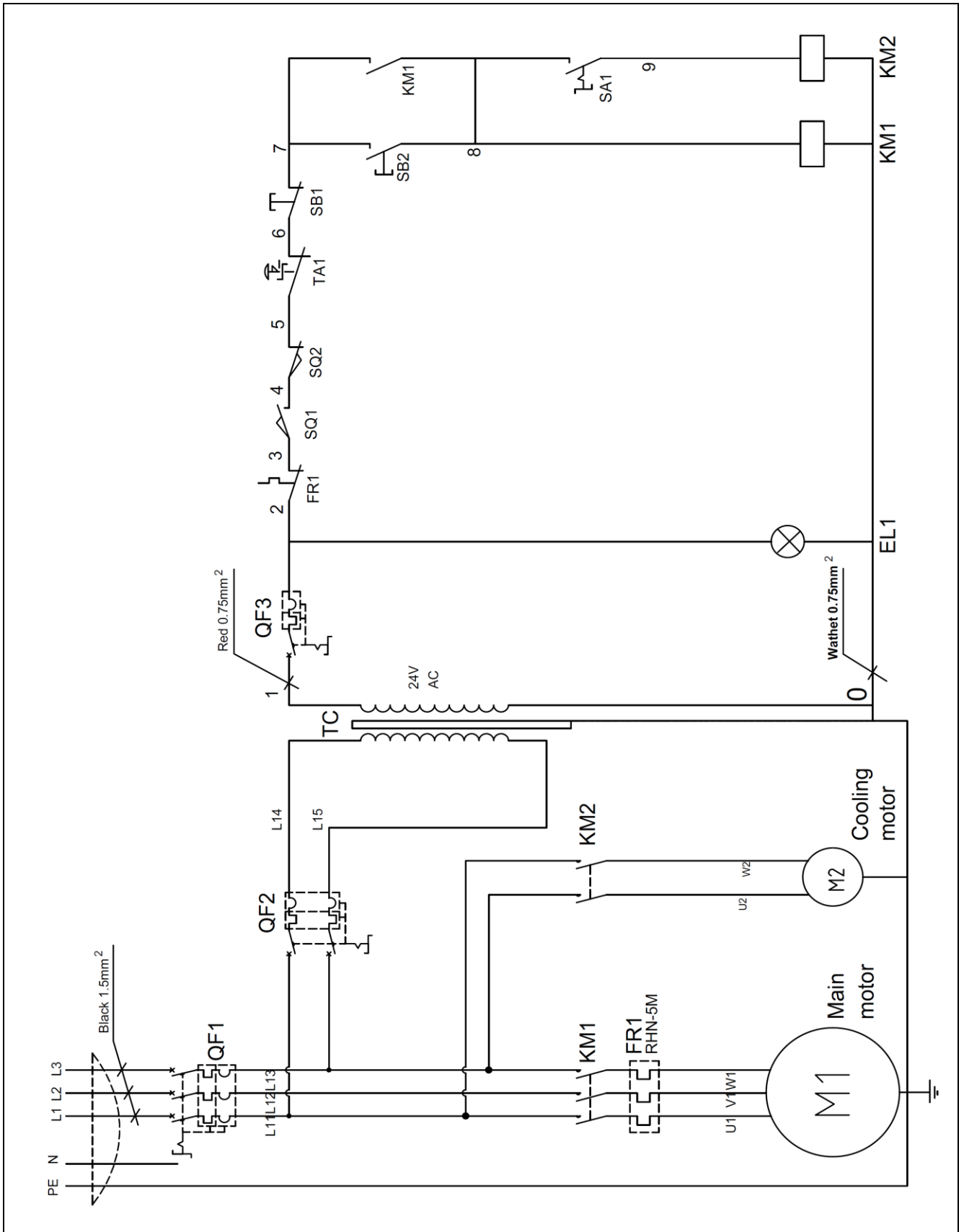
Index No.	Part No.	Description	Size	Qty
133	HVBS712L-133	Retainng Ring 8	8mm	4
134	GB/T819.1	Flat Head Screw	M5X12	2
135	HVBS712L-131	Guard Board		1
136	GB/T70.1	Hex Scket Head Cap Screw	M8X30	1
137	HVBS712L-137	Front Adjustable Seat		1
138	HVBS712L-138	Rear Adjustable Stand		1
139	HVBS712L-139	Thicken Washer	10mm	2
140	GB/T5781	Hex. Cap Head Screw	M10X40	1
141	GB/T70.1	Hex Scket Head Cap Screw	M5x10	2
142	HVBS712L-142	Support For Brush		1
143	HVBS712L-143	Brush Φ 50 (Yellow)		1
144	HVBS712L-144	Five-Pin Plug P551 & Power Cord 4G1.5mm ²	P551	1
145	HVBS712L-145	Tension Spring		1
146	GB/T70.1	Hex Scket Head Cap Screw	M6x6	1
147	HVBS712L-147	Switch Box		1
148	GB/T5781	Hex. Cap Head Screw	M10x25	1
149	GB/T95	Flat Washer	10mm	5
150	GB/T1096	Key 6X25	6x25	2
151	HVBS712L-151	Spacer Bush		1
152	HVBS712L-152	Gear Box		1
153	GB/T276	Bearing 6005-2Z	6005-2Z	3
154	HVBS712L-154	Internal Retaining Ring	47	2
155	HVBS712L-155	Seal Ring	ϕ 47X ϕ 25X7	1
156	HVBS712L-156	Adjustable Pad		1
157	HVBS712L-157	Output Shaft		1
158	GB/T894.1	External Retaing Ring	25	2
159	HVBS712L-159	Worm Wheel		1
160	HVBS712L-160	Sealing Gasket		1
161	HVBS712L-161	Cover For Gear Box		1
162	GB/T95	Flat Washer	6mm	4
163	GB/T70.1	Hex Scket Head Cap Screw	M6x20	4
164	HVBS712L-164	Breathable Bolt		1
165	HVBS712L-167	Rear Adjustable Seat		1
166	HVBS712L-166	Steering Wheel		1
167	HVBS712L-167	Board		1
168	HVBS712L-168	Fixed Seat For Hydraulic Cylinder		1
169	GB/T95	Flat Washer	8mm	3
170	GB/T5781	Hex. Cap Head Screw	M8x30	3
171	GB/T819.1	Flat Head Screw	M4x12	3
172	HVBS712L-172	Cover For Bearing		1
173	GB/T894.1	External Retaing Ring	17mm	1

Parts List for HVBS-712L Metal Band Saw

Index No.	Part No.	Description	Size	Qty
174	GB/T276	Bearing	6003-2Z	3
175	HVBS712L-175	Seal Ring	φ35Xφ17X7	1
176	HVBS712L-176	Spacer Bush		1
177	HVBS712L-177	Worm		1
178	HVBS712L-178	Shield Leather		1
179	GB/T96.1	Flat Washer	6mm	3
180	GB/T818	Pan Head Screw	M6x12	2
181	HVBS712L-181	Seating Board B For Motor		1
182	GB/T5781	Hex. Cap Head Screw	M8x40	1
183	GB/T6170	Hex Nut	M8	1
184	GB/T95	Flat Washer	8mm	3
185	GB/T5781	Hex. Cap Head Screw	M8x20	3
186	GB/T5781	Hex. Cap Head Screw	M8x50	2
187	GB/T6170	Hex Nut	M8	2
188	HVBS712L-188	Seating Board A For Motor		1
189	HVBS712L-189	Motor Assembly		1
190	GB/T5781	Hex. Cap Head Screw	M8x25	4
191	GB/T95	Flat Washer	8mm	8
192	GB/T6170	Hex Nut	M8	4
193	HVBS712L-193	Key 6		1
194	HVBS712L-194	Stellate Handle		1
195	HVBS712L-195	Belt Cover		1
196	GB/T77	Scoket Set Screw	M8x10	2
197	HVBS712L-197	Belt Pulley		1
198	GB/T77	Scoket Set Screw	M8x10	1
199	HVBS712L-199	Motor Pulley		1
200	HVBS712L-200	V- Belt		1
201	GB/T95	Flat Washer	6mm	2
202	GB/T818	Pan Head Screw	M6x12	2
203	HVBS712L-203	Vertical Workbench		1
	HVBS712L-ID	JETRUS ID Label (Not shown)		1
	HVBS712L -ML	JETRUS Motor Label (Not shown)		1
	JETRUS-LOGO	JETRUS -165L (Not shown)	165x42mm	1
	HVBS712L -WR	Warning Label (Not shown)		1

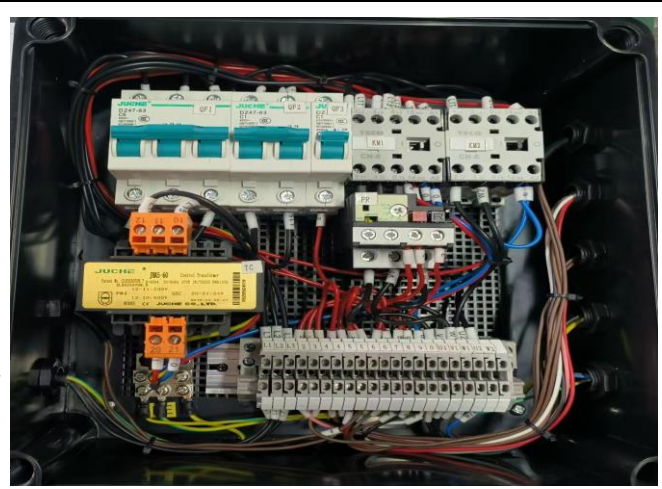
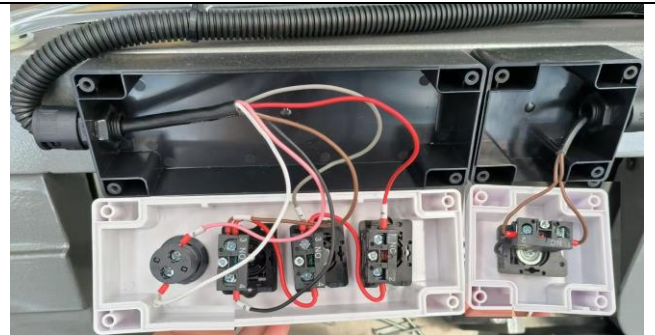
Wiring Diagram for HVBS-712L Metal Band Saw

JRM80712T..... 3 ~ 400V, 50Hz



Parts list of HVBS-712L Metal Band Saw Electrical Circuit

Index No.	Code	Description	Type / Spec.	Q/ty	Remark
1	QF1	Breaker	DZ47-63 / 3P6A	1	JUCHE
2	QF2	Breaker	DZ47-63 / 2P1A	1	JUCHE
3	QF3	Breaker	DZ47-63 / 1P1A	1	JUCHE
4	KM1/KM2	Ac Contractor	CN-6 / 3A1a AC24V 9A	2	TECO
5	FR1	Thermorelay	RHU-5M / 1.8-2.5A	1	JUCHE
6	TC	Transformer	JBK5-60 / 400 230/24V	1	JUCHE
7	SQ1	Micro Switch	KW-7-9 / 3A	1	
8	SQ2	Limited Switch	QKS7 / 8A	1	
9	TA1	Emergency Stop	XB2-BS542 / 3A	1	
10	SB1	Stop Button	XB2-EA42 / 3A	1	
11	SB2	Start Button	XB2-EA21 / 3A	1	
12	SA1	Pump Switch	XB2-ED21 / 3A	1	
13	EL1	Power Light	XB2-BVB1C / AC24V	1	
14		Five-Hole Button Box	DX5	1	
15	HVBS712L-144	Five-Pin Plug	P551 400V	1	KEDU
16	HVBS712L-144	Power Cord	4G1.5mm ² 2.5m	1	



Note: This manual is only for your reference. Owing to the continuous improvement of the machine, changes may be made at any time without obligation on notice. And please note the local voltage while operating this electric machine.